

IMPORTANT DATES

August 24th 2017
1st call for proposals

September 30th 2017
2nd call for proposals

November 1st 2017
Submission opening

January 31st 2018
Submission deadline

April 30th 2018
Decision of acceptance

May 1st 2018
Registration opening

May 30th 2018
Deadline for early bird registration

August 15th 2018
Deadline for late registration

September 12th-14th 2018
EARLI SIG 14 Conference



University of Geneva
Uni Mail Building

CONFERENCE CONVENORS

Laurent Filliettaz (University of Geneva)
Stephen Billett (Griffith University)

LOCAL CONTACT

Interaction & Training Team
Prof. Laurent Filliettaz
Faculty of psychology and
educational sciences (FPSE)
University of Geneva
40 boulevard du Pont d'Arve
CH-1211 Genève 4



9th International conference of the EARLI SIG 14
Learning and Professional Development

INTERACTION, LEARNING AND
PROFESSIONAL DEVELOPMENT

12th – 14th September 2018
Geneva, Switzerland



CONFERENCE THEME

The 9th SIG14 conference will focus on Interaction, learning and professional development. Much work and learning is premised upon interactions between and amongst interlocutors. Increasingly, professional work is becoming a group and, often, and inter-professional endeavour. Equally, contemporary conceptions of learning emphasise interactions between individuals who are learning and social partners, artefacts and social settings. Even models of professional development are increasingly being focused on models of interaction. From these standpoints, the conference will focus on how interactions in learning and professional development can be conceptualised, investigated and supported.

The conference will focus on the following research topics and themes:

- Work and education as contexts for professional learning and development
- Theories and methodologies for the study of professional learning and development
- Constraints and affordances of professional learning and work identities
- Vocational education and training in schooling and working life contexts
- Adult learning processes within the context of work
- Interactions at work and in vocational education
- Computer-supported collaborative learning in vocational and professional education
- Work analysis in vocational education and professional development

PRESENTATION FORMATS

Individual paper sessions
Interactive poster sessions
Thematic symposia, including three related papers
Round tables
Not and non perfect data

Submissions and registrations
are to be made through the conference web site



KEYNOTE SPEAKERS

- Helen Melander (Uppsala University, Sweden)
- Pierre Dillenbourg (EPFL, Lausanne)
- Claire Tourmen (University of California, Berkley)



REGISTRATION FEES

EARLI SIG 14 members

Early bird (before May 30th 2018) CHF 200.-
Late registration (after May 30th 2018) CHF 250.-

NON EARLI SIG 14 members

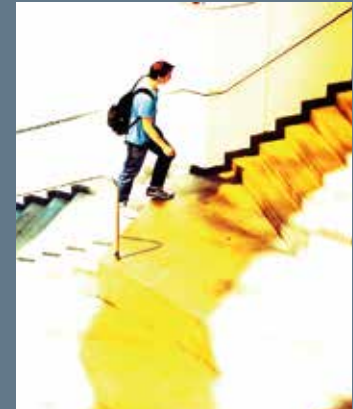
Early bird (before May 30th 2018) CHF 250.-
Late registration (after May 30th 2018) CHF 300.-

STUDENTS

Early bird (before May 30th 2018) CHF 150.-
Late registration (after May 30th 2018) CHF 200.-

CONFERENCE DINNER

3-4 course dinner including wine CHF 70.-



LANGUAGE OF THE CONFERENCE

English is the main and official conference language of EARLI SIG 14. Considering the Francophone context of Geneva, contributions in French will also be possible. Contributors using the French language are invited to provide summaries or resources (e.g. Powerpoints) translated in English to facilitate mutual understanding. The language of submission will be consistent with the language of presentation.